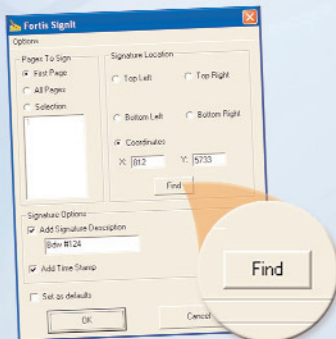
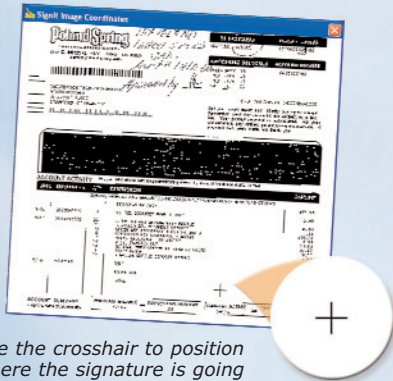




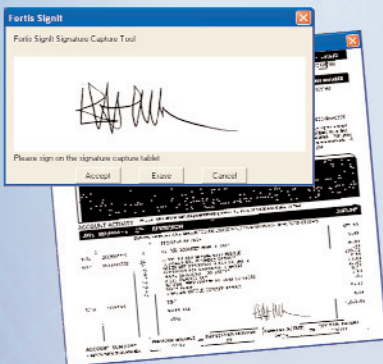
Simply click on the button



SignIt dialog box appears - user selects what page(s) to place a signature as well as date/time stamp



Use the crosshair to position where the signature is going



SignIt merges the user signature tiff image and it becomes embedded to the digital document

What is SignIt?

SignIt is an electronic signature pad technology integrated with Fortis and Topaz Systems line of products.

SignIt is a unique product that reduces the need to print, sign and rescan documents as well as adds greater efficiencies to workflow processes that require signatures.

SignIt natively embeds the electronic TIFF signature to the currently open Fortis document. Thus, we refer to SignIt as a digital image signature. Users can apply electronic signature to first page, selection of pages or entire document as well as flexibility to pinpoint exactly where the user can sign. SignIt works with the Fortis LAN client, PowerWeb and ApproveIt interfaces - supports black and white images. With SignIt the manual process of signing document (consent or insurance forms, invoices or purchase orders) is no longer necessary - rather than incurring the added cost of print, scan and index - patients, customers and internal staff simply sign each Fortis document once.

What is the Business Case?

A mortgage company rather than print the hundreds of pages necessary for a mortgage closing- can digitally send the documents to the attorney for import into their Fortis system. During the closing the buyer and seller can physically sign documents electronically, reducing the need to rescan documents and process paper. With SignIt paper work can be immediately electronically delivered back to the bank via email.

Other use case scenario's are in the health care field, specifically hospitals during patient admitting. Rather than manually signing consent and insurance forms and incurring the added cost of print, scan and index - patients simply sign each Fortis document once. No need to print, scan or index any additional documents.

How Does it Work?

User simply selects CTRL+L which launches the SignIt dialog within the thick client or selects the SignIt button from within PW/ApproveIt. SignIt natively embeds the electronic TIFF signature to the currently open Fortis document. Users can apply electronic signature to first page, selection of pages or entire document. User selects placement of signature using predefined settings or the "Find" button which allows a cross-hair to be drawn around the required signature area.

User has option to apply a date/time stamp as well as a signature description which can be the printed name of the authorizer. These are global settings.





SignIt requirements and considerations

- Topaz Systems SigPlus and SigPlus Imager toolkit are installed on the client
- Works with Topaz USB, serial or Ethernet signature pads
- Only scanned black/white images can be signed within Fortis
- Support for Adobe Acrobat and MS Office documents prior to entry into Fortis
- Support for signature pad pass-thru to Terminal Services or Citrix

SignIt Terminal Services Requirements

- Windows 2003 Server Terminal Services connection has COM port mapping checkbox cleared
- Group policy permission for "Do not allow COM port redirection" is disabled
- Works with Topaz Serial signature pads only

All of these options can be configured on a document type basis, so when an invoice document type is open for instance, SignIt can automatically apply the default settings without displaying this dialog. Note: this requires some minimal customization from base product.

SignIt has been designed to work with Topaz Systems line of signature pad technology. Using Topaz Systems' simple USB, Serial or Ethernet plug-and-play technologies -signing documents has never been so easy.

SignIt does support terminal services or Citrix environments that have serial pass-through's. USB attached signature pads do not work in this topology.

